

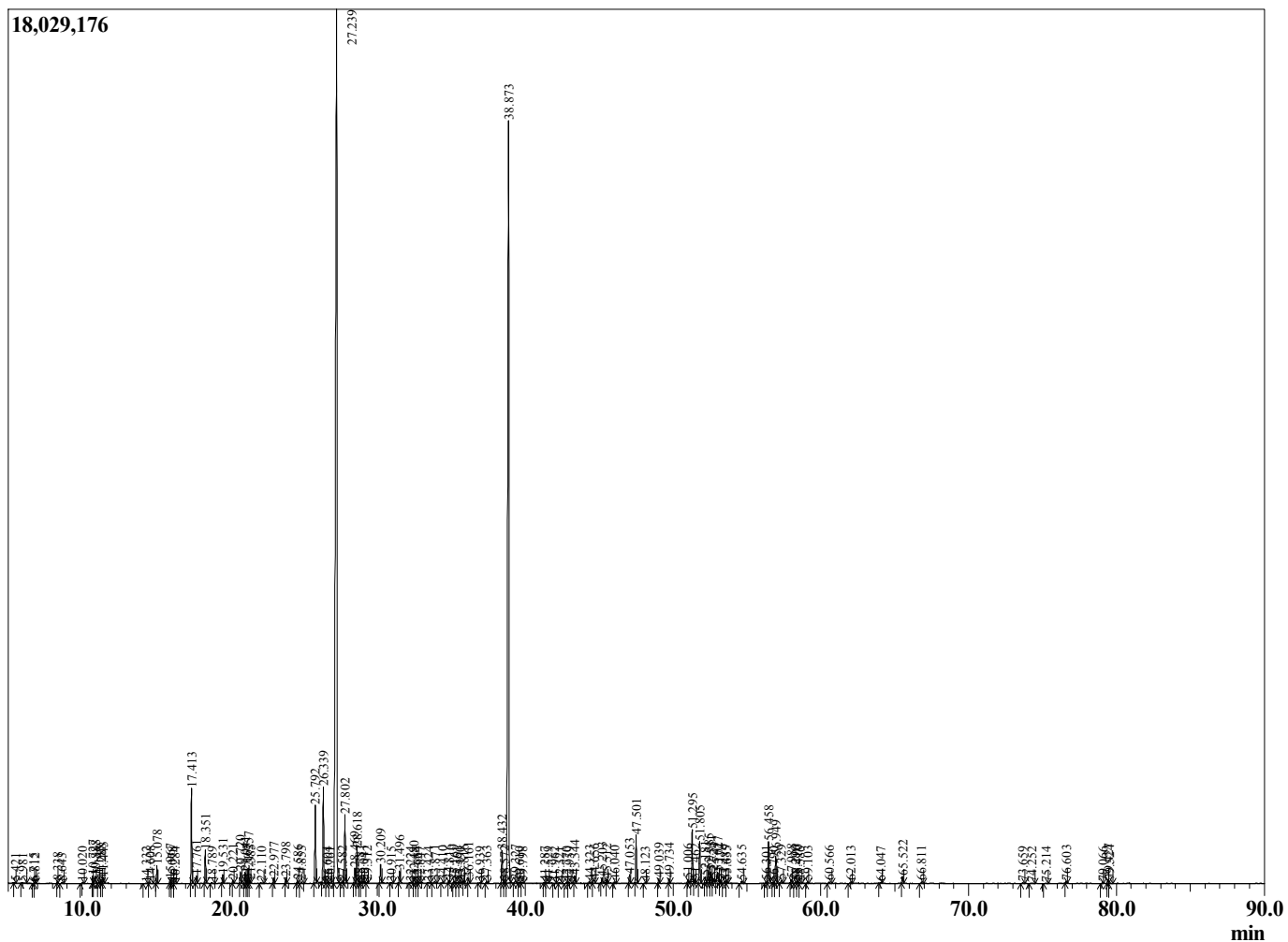
Sample Information

Sample Type : Essential Oil
 Sample Name : Artemisia absinthium

Wormwood
 Lot# USF9-FT
 Country: USA



Chromatogram Artemisia absinthium



Peak	R.Time	Name	Area%
1	5.421	2-Methylbutanal	0.01
2	5.981	2-Ethylfuran	0.02
3	6.715	3-Methylbutanol	0.01
4	6.812	2-Methylbutanol	0.01
5	8.338	1-Octene	0.04
6	8.643	Octane	0.03
7	10.020	Hexanol	0.03
8	10.727	cis-Salvene	0.15
9	10.888	Unidentified	0.17
10	11.148	Cyclopentane, (2-methyl-1-propenyl)-	0.03
11	11.288	E-2-Hexenol	0.10
12	11.443	Hexanol	0.13
13	14.332	Hashishene	0.01
14	14.608	alpha-Thujene	0.04
15	15.078	alpha-Pinene	0.40
16	15.967	alpha-Fenchene	0.09
17	16.078	Camphene	0.02
18	16.284	Verbenene	0.02
19	17.413	Sabinene	2.22
20	17.761	beta-Pinene	0.23
21	18.351	Myrcene	0.80
22	18.789	Unidentified	0.04
23	19.531	alpha-Phellandrene	0.21
24	20.221	alpha-Terpinene	0.07
25	20.720	para-Cymene	0.30
26	21.041	Limonene	0.28
27	21.167	beta-Phellandrene	0.07
28	21.257	1,8-Cineole	0.39
29	21.385	Z-beta-Ocimene	0.06
30	22.110	E-beta-Ocimene	0.03
31	22.977	gamma-Terpinene	0.13
32	23.798	trans-Sabinene hydrate	0.14
33	24.586	Unidentified	0.06
34	24.853	Terpinolene	0.06
35	25.792	Linalool	2.33
36	26.339	alpha-Thujone	2.70
37	26.604	Hexyl butyrate	0.02
38	26.761	Unidentified	0.04
39	27.239	beta-Thujone	41.35
40	27.582	cis-p-Menth-2-en-1-ol	0.04
41	27.802	Epoxyocimene	1.81
42	28.469	3-Thujanol	0.45
43	28.618	cis-Sabinol	0.97
44	28.781	trans-Pinocarveol	0.08
45	29.041	Unidentified	0.04
46	29.312	Unidentified	0.03
47	30.209	Lavandulol	0.53
48	30.915	Borneol	0.04
49	31.496	Terpinen-4-ol	0.31
50	32.224	Unidentified	0.03
51	32.480	alpha-Terpineol	0.17
52	32.664	Unidentified	0.03
53	32.847	Unidentified	0.03
54	33.424	Unidentified	0.03
55	33.871	gamma-Isogeraniol	0.09
56	34.410	Nerol	0.05

R.Time	Name	Area%
34.816	Z-3-Hexenyl-2-methylbutyrate	0.05
35.169	Hexyl-2-methylbutyrate	0.07
35.361	Neral	0.04
35.590	Hexyl-3-methylbutyrate	0.02
35.816	Carvone	0.05
36.161	Carvotanacetone	0.15
36.939	Unidentified	0.03
37.363	Geranial	0.05
38.432	Lavandulyl acetate	0.93
38.572	Bornyl acetate	0.04
38.873	trans-Sabinyl acetate	30.19
39.327	Myrtenyl acetate	0.08
39.610	Tridecane	0.01
39.798	Unidentified	0.03
41.287	Unidentified	0.02
41.529	Unidentified	0.04
41.962	E-2-Hexenyl tiglate	0.02
42.321	Unidentified	0.04
42.770	Unidentified	0.03
42.959	Eugenol	0.04
43.344	Neryl acetate	0.21
44.323	Lavandulyl valerate?	0.06
44.656	alpha-Copaene	0.13
45.203	beta-Bourbonene	0.17
45.512	beta-Elemene	0.08
46.040	Unidentified	0.05
47.053	Neryl isobutyrate	0.26
47.501	beta-Caryophyllene	1.42
48.123	beta-Copaene	0.04
49.039	Neryl propionate	0.11
49.734	alpha-Humulene	0.11
51.006	gamma-Curcumene	0.09
51.295	Germacrene D	1.57
51.462	gamma-Selinene	0.07
51.805	beta-Selinene	1.27
52.181	Bicyclogermacrene	0.18
52.385	Lavandulyl isovalerate	0.40
52.551	Unidentified	0.31
52.724	Neryl isobutyrate	0.09
53.027	3,6-Dihydrochamazulene	0.34
53.174	Dihydrochamazulene isomer	0.06
53.489	delta-Cadinene	0.06
53.635	alpha-Panasinsene	0.04
54.635	Unidentified	0.07
56.301	Citronellyl valerate	0.04
56.458	Neryl isovalerate	1.21
56.790	Unidentified	0.03
56.949	Neryl-2-methylbutyrate	0.84
57.329	Caryophyllene oxide	0.09
57.988	Geranyl-2-methylbutyrate	0.10
58.290	Unidentified	0.05
58.410	Geranyl isovalerate	0.06
58.586	Unidentified	0.03
59.103	5,6-Dihydrochamazulene	0.05
60.566	Unidentified	0.07
62.013	Juniper camphor	0.06
64.047	Unidentified	0.03
65.522	Chamazulene	0.20
66.811	Unidentified	0.05
73.659	Unidentified	0.04
74.252	Unidentified	0.03
75.214	Unidentified	0.02

R.Time	Name	Area%
76.603	geranyl-alpha-Terpinene	0.06
79.066	Unidentified	0.04
79.427	9-(15,16-Dihydro-15-methylenegeranyl)-alp	0.12
79.524	9-(15,16-Dihydro-15-methylenegeranyl)-p-cy	0.07
91.930	Unidentified	0.01
92.540	Unidentified	0.02
		100.00